



Where Georgia comes together.

STAFF REPORT

From the Department of Community Development

September 4, 2024

CASE NUMBER: ANNX-0111-2024

APPLICANT: Bryant Engineering, Chad Bryant

REQUEST: Annexation and Rezone of 22.5 acres from RAG (County) to R-1, Single-family Residential

LOCATION: Main Street; Tax Map Number: 000570 008000

BACKGROUND INFORMATION: The applicant proposes to annex the entirety of the above referenced parcel into the City of Perry. It will be combined with the properties to the immediate west of this parcel to create a subdivision. The lot is proposed to be zoned R-1, Single-family Residential.

There are no known covenants or restrictions on the subject property which would preclude the uses permitted in the proposed zoning district.

STANDARDS FOR ESTABLISHING A ZONING CLASSIFICATION:

1. The existing land uses and zoning classifications of nearby property.

	Zoning	Land Use
North	GU, Governmental Use	Public Park
South	C-1/R-AG (County), Commercial/Single-Family Residential	Single-family residences, gas station, power substation
East	R-AG, Residential Agriculture	Agriculture
West	R-1, Single-Family Residential	Vacant land (approved subdivision)

- 2. Describe how uses permitted in the proposed zoning district are compatible with the uses and development of surrounding properties.** The proposed zoning district allows only single-family residential uses by right. This is consistent with surrounding uses.
- 3. Describe why the proposed zoning district will not adversely impact the use of surrounding properties.** The proposed zoning district and the development of single-family residences is not expected to adversely impact the use of surrounding properties.
- 4. Describe how the proposed zoning district is consistent with the Comprehensive Plan.** The subject property is in a “Suburban Residential” character area in the 2022 Joint Comprehensive Plan. The Suburban Residential character area calls for a mix of housing densities and types.

- 5. Describe how the proposed zoning district will not cause an excessive burden upon existing public facilities and services.** The proposed zoning district will not cause an excessive burden on existing public facilities. Main Street and Keith Dr are arterial streets which can accommodate additional traffic generated by development allowed in the district. City water capacity is available. Sanitary sewer is available; capacity will be evaluated based on the developer's phasing plan. Stormwater runoff will be reviewed as part of the development for compliance with the city's ordinances.
- 6. Describe any other existing or changing conditions affecting the use and development of the subject property which support approval of the requested zoning district.** The property is contiguous to the existing city boundary on the west and north property lines.

STAFF RECOMMENDATION: Staff recommends approval of the annexation request and the proposed zoning classification of R-1, Single-family Residential.

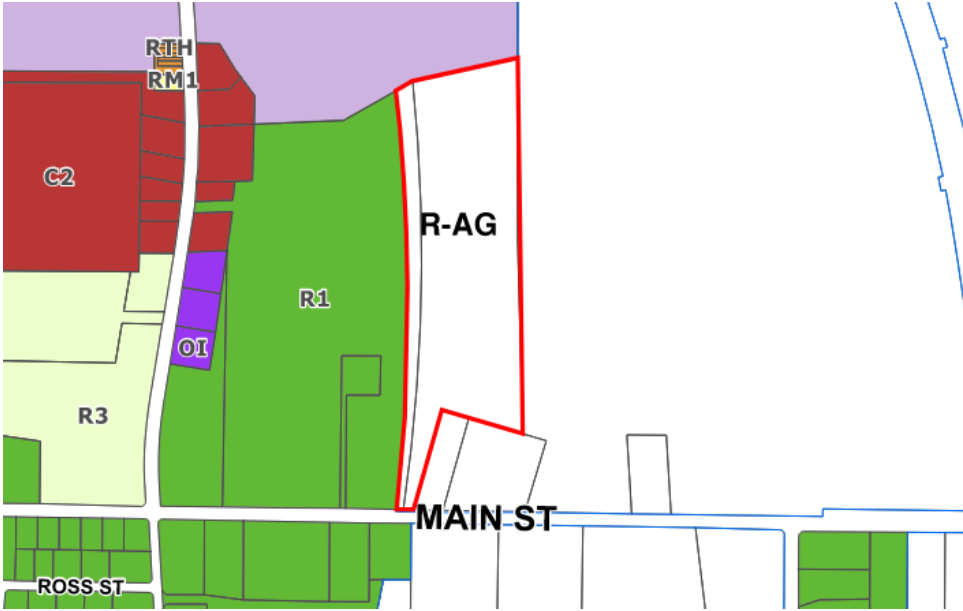


ANNX-0111-2024

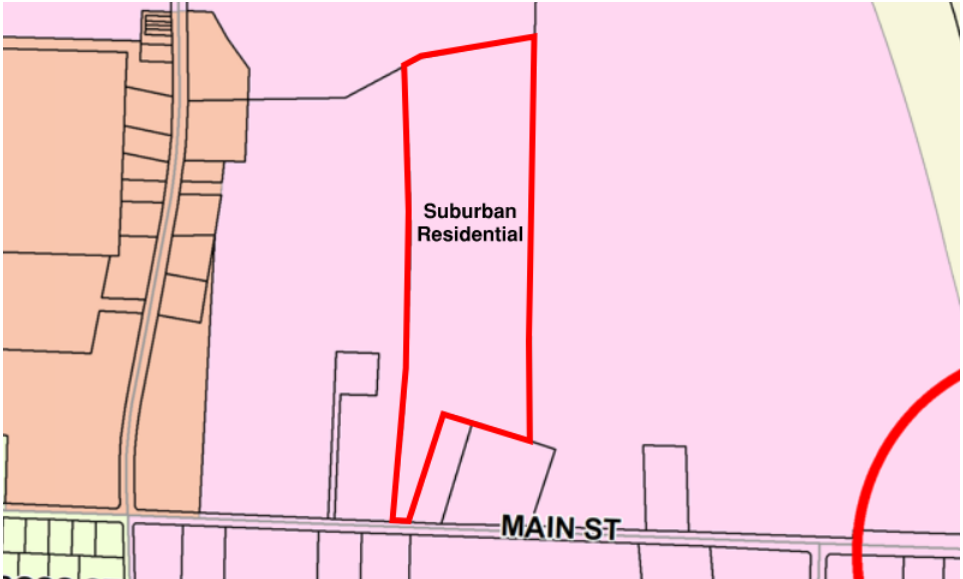
0 MAIN ST

Annex 22.5 acres into city limits, zoned R-1, Single-Family Residential

Aerial



Zoning



Character Area



Where Georgia comes together.

Application # ANNX
0111-2024

Application for Annexation

Contact Community Development (478) 988-2720

*Indicates Required Field

	*Applicant	*Property Owner
*Name	Bryant Engineering, Chad Bryant	Parkway Farms, Charles Ayer
*Title		
*Address	PO Box 1821 Perry, GA 31069	1444 Sam Nunn Blvd Perry, GA 31069
*Phone	478-224-7070	478-988-2380
*Email	chad@bryantengllc.com	charlesayer@thesportscenter.com

Property Information

*Street Address or Location	Main Street 22.5 acres
*Tax Map #(s)	000570008000
*Legal Description	A. Provide a copy of the deed as recorded in the County Courthouse, or a metes and bounds description of the land if a deed is not available; B. Provide a survey plat of the property, tied to the Georgia Planes Coordinate System. **If the property being annexed is a portion of a recorded parcel, the portion being annexed must be a separate recorded parcel before this application will be accepted as complete.**

Request

*Current County Zoning District	RAG	*Proposed City Zoning District	R1
*Please describe the existing and proposed use of the property <u>Note: A Site Plan and/or other information which fully describes your proposal may benefit your application.</u>			

Instructions

- The application and fee (made payable to the City of Perry) must be received by the Community Development Office no later than the date reflected on the attached schedule.
- *Fees:**
 - Residential Zoning (R-Ag, R-1, R-2, R-3) - \$316.00 plus \$27.00/acre
 - Non-residential Zoning (other than R-Ag, R-1, R-2, R-3) - \$527.00 plus \$42.00/acre
- *The applicant/owner must respond to the 'standards' on page 2 of this application (The applicant bears the burden of proof to demonstrate that the application complies with these standards).** See Sections 2-2 and 2-3.1 of the Land Management Ordinance for more information. You may include additional pages when addressing the standards.
- The staff will review the application to verify that all required information has been submitted. The staff will contact the applicant with a list of any deficiencies which must be corrected prior to placing the application on the planning commission agenda.
- Annexation applications require an informational hearing before the planning commission and a public hearing before City Council. Public notice sign(s) will be posted on the property at least 15 days prior to the scheduled hearing dates.
- *The applicant must be present at the hearings to present the application and answer questions that may arise.**
- *Campaign Notice required by O.C.G.A. Section 36-67A-3:** Within the past two years has the applicant made either campaign contributions and/or gifts totaling \$250.00 or more to a local government official? "Applicant" is defined as any person who applies for a rezoning action and any attorney or other person representing or acting on behalf of a person who applies for a rezoning action. Yes No
If yes, please complete and submit a Disclosure Form available from the Community Development office.

8. The applicant and property owner affirm that all information submitted with this application, including any/all supplemental information, is true and correct to the best of their knowledge and they have provided full disclosure of the relevant facts.

9. *Signatures:

*Applicant	*Date 8/5/24
*Property Owner/Authorized Agent	*Date 8/5/24

Standards for Granting a Zoning Classification

The applicant bears the burden of proof to demonstrate that an application complies with these standards.

Are there covenants and restrictions pertaining to the property which would preclude the uses permitted in the proposed zoning district?

1. Identify the existing land uses and zoning classification of nearby properties.
2. Whether the proposed zoning will allow uses that are suitable in view of the uses and development of adjacent and nearby property.
3. Whether the proposed zoning will adversely affect the existing use or usability of adjacent or nearby property.
4. Whether the zoning proposal is in conformity with the policies and intent of the Comprehensive Plan.
5. Whether the zoning proposal will result in a use which will cause an excessive burden upon existing streets, transportation facilities, utilities, or schools.
6. Whether there are other existing or changing conditions affecting the use and development of the property which give supporting grounds for either approval or disapproval of the zoning proposal.

Revised 7/1/24

1. The subject parcel is currently zoned RAG, and is undeveloped. The parcels to the north are zoned GU. The property to the south of Main Street is zoned R-1. The property to the west of Keith Drive is zoned R3. The property to the east is zoned as R-AG, and is undeveloped.
2. The R-1 zoning classification permits single-family residential uses. The surrounding properties are zoned as R-AG (county), R-1 (city), and R-3 (city); therefore, the proposed use of single-family residential is consistent with adjacent and nearby properties.
3. With the exception of the north adjacent lot, all other nearby properties are zoned residential including requested zoning of R-. The proposed R-1 zoning does not adversely impact the existing use or usability of surrounding properties.
4. According to the 2022 Joint Comprehensive Plan Update, the subject property is located in the Suburban Residential character area; therefore, the proposed R-1 zoning designated for residential use is in compliance with the Comprehensive Plan.
5. This parcel is located off Main Street (Hwy 341) which is a state route and a major throughfare in Perry.
6. With the exception of the 1.42 acre tract, all properties have been zoned residential and is undeveloped.

LEGEND

- 1/2 IRON NAIL
- 1/2 IRON ROD UNLESS OTHERWISE NOTED
- 1/4" 1/2" IRON PIPE RUN AND CAP
- ⊘ 4" CONC RIGID MANHOLE FOUND
- ⊘ 18" CONC RIGID MANHOLE FOUND
- ⊘ 24" CONC RIGID MANHOLE FOUND
- ⊘ 36" CONC RIGID MANHOLE FOUND
- ⊘ 48" CONC RIGID MANHOLE FOUND
- ⊘ 60" CONC RIGID MANHOLE FOUND
- ⊘ 72" CONC RIGID MANHOLE FOUND
- ⊘ 84" CONC RIGID MANHOLE FOUND
- ⊘ 96" CONC RIGID MANHOLE FOUND
- ⊘ 108" CONC RIGID MANHOLE FOUND
- ⊘ 120" CONC RIGID MANHOLE FOUND
- ⊘ 144" CONC RIGID MANHOLE FOUND
- ⊘ 168" CONC RIGID MANHOLE FOUND
- ⊘ 192" CONC RIGID MANHOLE FOUND
- ⊘ 216" CONC RIGID MANHOLE FOUND
- ⊘ 240" CONC RIGID MANHOLE FOUND
- ⊘ 264" CONC RIGID MANHOLE FOUND
- ⊘ 288" CONC RIGID MANHOLE FOUND
- ⊘ 312" CONC RIGID MANHOLE FOUND
- ⊘ 336" CONC RIGID MANHOLE FOUND
- ⊘ 360" CONC RIGID MANHOLE FOUND
- ⊘ 384" CONC RIGID MANHOLE FOUND
- ⊘ 408" CONC RIGID MANHOLE FOUND
- ⊘ 432" CONC RIGID MANHOLE FOUND
- ⊘ 456" CONC RIGID MANHOLE FOUND
- ⊘ 480" CONC RIGID MANHOLE FOUND
- ⊘ 504" CONC RIGID MANHOLE FOUND
- ⊘ 528" CONC RIGID MANHOLE FOUND
- ⊘ 552" CONC RIGID MANHOLE FOUND
- ⊘ 576" CONC RIGID MANHOLE FOUND
- ⊘ 600" CONC RIGID MANHOLE FOUND
- ⊘ 624" CONC RIGID MANHOLE FOUND
- ⊘ 648" CONC RIGID MANHOLE FOUND
- ⊘ 672" CONC RIGID MANHOLE FOUND
- ⊘ 696" CONC RIGID MANHOLE FOUND
- ⊘ 720" CONC RIGID MANHOLE FOUND
- ⊘ 744" CONC RIGID MANHOLE FOUND
- ⊘ 768" CONC RIGID MANHOLE FOUND
- ⊘ 792" CONC RIGID MANHOLE FOUND
- ⊘ 816" CONC RIGID MANHOLE FOUND
- ⊘ 840" CONC RIGID MANHOLE FOUND
- ⊘ 864" CONC RIGID MANHOLE FOUND
- ⊘ 888" CONC RIGID MANHOLE FOUND
- ⊘ 912" CONC RIGID MANHOLE FOUND
- ⊘ 936" CONC RIGID MANHOLE FOUND
- ⊘ 960" CONC RIGID MANHOLE FOUND
- ⊘ 984" CONC RIGID MANHOLE FOUND
- ⊘ 1008" CONC RIGID MANHOLE FOUND
- ⊘ 1032" CONC RIGID MANHOLE FOUND
- ⊘ 1056" CONC RIGID MANHOLE FOUND
- ⊘ 1080" CONC RIGID MANHOLE FOUND
- ⊘ 1104" CONC RIGID MANHOLE FOUND
- ⊘ 1128" CONC RIGID MANHOLE FOUND
- ⊘ 1152" CONC RIGID MANHOLE FOUND
- ⊘ 1176" CONC RIGID MANHOLE FOUND
- ⊘ 1200" CONC RIGID MANHOLE FOUND

SURVEYOR'S CERTIFICATION

I, **MAGNUS R. LEAD**, Surveyor No. 15811, do hereby certify that this plat is true and correct and was prepared from an actual survey of the property hereon under my personal supervision and that all necessary and proper precautions have been observed in the execution of this survey. I am a resident of the State of Georgia and am duly qualified and sworn under the laws of this State to perform the duties of my office. My commission expires on the 31st day of December, 2011. Witness my hand and seal at Marietta, Georgia, this 14th day of February, 2011.

Magnus R. Lead
 Registered Professional Surveyor
 No. 15811
 State of Georgia

- REFERENCES**
 P. 17 PG. 204-205
 P. 18 PG. 211
 P. 19 PG. 212
 P. 20 PG. 216
 P. 21 PG. 216
 P. 22 PG. 216
 P. 23 PG. 216
 P. 24 PG. 216
 P. 25 PG. 216
 P. 26 PG. 216
 P. 27 PG. 216
 P. 28 PG. 216
 P. 29 PG. 216
 P. 30 PG. 216
 P. 31 PG. 216
 P. 32 PG. 216
 P. 33 PG. 216
 P. 34 PG. 216
 P. 35 PG. 216
 P. 36 PG. 216
 P. 37 PG. 216
 P. 38 PG. 216
 P. 39 PG. 216
 P. 40 PG. 216
 P. 41 PG. 216
 P. 42 PG. 216
 P. 43 PG. 216
 P. 44 PG. 216
 P. 45 PG. 216
 P. 46 PG. 216
 P. 47 PG. 216
 P. 48 PG. 216
 P. 49 PG. 216
 P. 50 PG. 216
 P. 51 PG. 216
 P. 52 PG. 216
 P. 53 PG. 216
 P. 54 PG. 216
 P. 55 PG. 216
 P. 56 PG. 216
 P. 57 PG. 216
 P. 58 PG. 216
 P. 59 PG. 216
 P. 60 PG. 216
 P. 61 PG. 216
 P. 62 PG. 216
 P. 63 PG. 216
 P. 64 PG. 216
 P. 65 PG. 216
 P. 66 PG. 216
 P. 67 PG. 216
 P. 68 PG. 216
 P. 69 PG. 216
 P. 70 PG. 216
 P. 71 PG. 216
 P. 72 PG. 216
 P. 73 PG. 216
 P. 74 PG. 216
 P. 75 PG. 216
 P. 76 PG. 216
 P. 77 PG. 216
 P. 78 PG. 216
 P. 79 PG. 216
 P. 80 PG. 216
 P. 81 PG. 216
 P. 82 PG. 216
 P. 83 PG. 216
 P. 84 PG. 216
 P. 85 PG. 216
 P. 86 PG. 216
 P. 87 PG. 216
 P. 88 PG. 216
 P. 89 PG. 216
 P. 90 PG. 216
 P. 91 PG. 216
 P. 92 PG. 216
 P. 93 PG. 216
 P. 94 PG. 216
 P. 95 PG. 216
 P. 96 PG. 216
 P. 97 PG. 216
 P. 98 PG. 216
 P. 99 PG. 216
 P. 100 PG. 216
 P. 101 PG. 216
 P. 102 PG. 216
 P. 103 PG. 216
 P. 104 PG. 216
 P. 105 PG. 216
 P. 106 PG. 216
 P. 107 PG. 216
 P. 108 PG. 216
 P. 109 PG. 216
 P. 110 PG. 216
 P. 111 PG. 216
 P. 112 PG. 216
 P. 113 PG. 216
 P. 114 PG. 216
 P. 115 PG. 216
 P. 116 PG. 216
 P. 117 PG. 216
 P. 118 PG. 216
 P. 119 PG. 216
 P. 120 PG. 216
 P. 121 PG. 216
 P. 122 PG. 216
 P. 123 PG. 216
 P. 124 PG. 216
 P. 125 PG. 216
 P. 126 PG. 216
 P. 127 PG. 216
 P. 128 PG. 216
 P. 129 PG. 216
 P. 130 PG. 216
 P. 131 PG. 216
 P. 132 PG. 216
 P. 133 PG. 216
 P. 134 PG. 216
 P. 135 PG. 216
 P. 136 PG. 216
 P. 137 PG. 216
 P. 138 PG. 216
 P. 139 PG. 216
 P. 140 PG. 216
 P. 141 PG. 216
 P. 142 PG. 216
 P. 143 PG. 216
 P. 144 PG. 216
 P. 145 PG. 216
 P. 146 PG. 216
 P. 147 PG. 216
 P. 148 PG. 216
 P. 149 PG. 216
 P. 150 PG. 216
 P. 151 PG. 216
 P. 152 PG. 216
 P. 153 PG. 216
 P. 154 PG. 216
 P. 155 PG. 216
 P. 156 PG. 216
 P. 157 PG. 216
 P. 158 PG. 216
 P. 159 PG. 216
 P. 160 PG. 216
 P. 161 PG. 216
 P. 162 PG. 216
 P. 163 PG. 216
 P. 164 PG. 216
 P. 165 PG. 216
 P. 166 PG. 216
 P. 167 PG. 216
 P. 168 PG. 216
 P. 169 PG. 216
 P. 170 PG. 216
 P. 171 PG. 216
 P. 172 PG. 216
 P. 173 PG. 216
 P. 174 PG. 216
 P. 175 PG. 216
 P. 176 PG. 216
 P. 177 PG. 216
 P. 178 PG. 216
 P. 179 PG. 216
 P. 180 PG. 216
 P. 181 PG. 216
 P. 182 PG. 216
 P. 183 PG. 216
 P. 184 PG. 216
 P. 185 PG. 216
 P. 186 PG. 216
 P. 187 PG. 216
 P. 188 PG. 216
 P. 189 PG. 216
 P. 190 PG. 216
 P. 191 PG. 216
 P. 192 PG. 216
 P. 193 PG. 216
 P. 194 PG. 216
 P. 195 PG. 216
 P. 196 PG. 216
 P. 197 PG. 216
 P. 198 PG. 216
 P. 199 PG. 216
 P. 200 PG. 216
 P. 201 PG. 216
 P. 202 PG. 216
 P. 203 PG. 216
 P. 204 PG. 216
 P. 205 PG. 216
 P. 206 PG. 216
 P. 207 PG. 216
 P. 208 PG. 216
 P. 209 PG. 216
 P. 210 PG. 216
 P. 211 PG. 216
 P. 212 PG. 216
 P. 213 PG. 216
 P. 214 PG. 216
 P. 215 PG. 216
 P. 216 PG. 216
 P. 217 PG. 216
 P. 218 PG. 216
 P. 219 PG. 216
 P. 220 PG. 216
 P. 221 PG. 216
 P. 222 PG. 216
 P. 223 PG. 216
 P. 224 PG. 216
 P. 225 PG. 216
 P. 226 PG. 216
 P. 227 PG. 216
 P. 228 PG. 216
 P. 229 PG. 216
 P. 230 PG. 216
 P. 231 PG. 216
 P. 232 PG. 216
 P. 233 PG. 216
 P. 234 PG. 216
 P. 235 PG. 216
 P. 236 PG. 216
 P. 237 PG. 216
 P. 238 PG. 216
 P. 239 PG. 216
 P. 240 PG. 216
 P. 241 PG. 216
 P. 242 PG. 216
 P. 243 PG. 216
 P. 244 PG. 216
 P. 245 PG. 216
 P. 246 PG. 216
 P. 247 PG. 216
 P. 248 PG. 216
 P. 249 PG. 216
 P. 250 PG. 216
 P. 251 PG. 216
 P. 252 PG. 216
 P. 253 PG. 216
 P. 254 PG. 216
 P. 255 PG. 216
 P. 256 PG. 216
 P. 257 PG. 216
 P. 258 PG. 216
 P. 259 PG. 216
 P. 260 PG. 216
 P. 261 PG. 216
 P. 262 PG. 216
 P. 263 PG. 216
 P. 264 PG. 216
 P. 265 PG. 216
 P. 266 PG. 216
 P. 267 PG. 216
 P. 268 PG. 216
 P. 269 PG. 216
 P. 270 PG. 216
 P. 271 PG. 216
 P. 272 PG. 216
 P. 273 PG. 216
 P. 274 PG. 216
 P. 275 PG. 216
 P. 276 PG. 216
 P. 277 PG. 216
 P. 278 PG. 216
 P. 279 PG. 216
 P. 280 PG. 216
 P. 281 PG. 216
 P. 282 PG. 216
 P. 283 PG. 216
 P. 284 PG. 216
 P. 285 PG. 216
 P. 286 PG. 216
 P. 287 PG. 216
 P. 288 PG. 216
 P. 289 PG. 216
 P. 290 PG. 216
 P. 291 PG. 216
 P. 292 PG. 216
 P. 293 PG. 216
 P. 294 PG. 216
 P. 295 PG. 216
 P. 296 PG. 216
 P. 297 PG. 216
 P. 298 PG. 216
 P. 299 PG. 216
 P. 300 PG. 216

TOTAL AREA: 25.27 ACRES

NOTES:
 THIS PROPERTY IS SUBJECT TO ANY RESTRICTIONS OR EASEMENTS THAT MAY BE RECORDED THEREON.
 THE FIELD DATA FOR WHICH THIS PLAT IS BASED WAS OBTAINED USING A TOTAL STATION THEODOLITE AND HAS A LINEAR PRECISION RATIO OF 1:100,000 PER 1" AS MEASURED AND IS BASED ON THE GEODETIC DATUM 1983. THIS PLAT HAS BEEN CHECKED FOR ACCURACY AND FOUND TO BE IN ACCORDANCE WITH THE STANDARDS OF THE PROFESSION.

IN ACCORDANCE WITH THE STANDARDS OF THE PROFESSION, I HEREBY CERTIFY THAT THE FIELD DATA WAS OBTAINED USING A TOTAL STATION THEODOLITE AND HAS A LINEAR PRECISION RATIO OF 1:100,000 PER 1" AS MEASURED AND IS BASED ON THE GEODETIC DATUM 1983. THIS PLAT HAS BEEN CHECKED FOR ACCURACY AND FOUND TO BE IN ACCORDANCE WITH THE STANDARDS OF THE PROFESSION.



FOR THE CLERK OF SUPERIOR COURTS USE ONLY

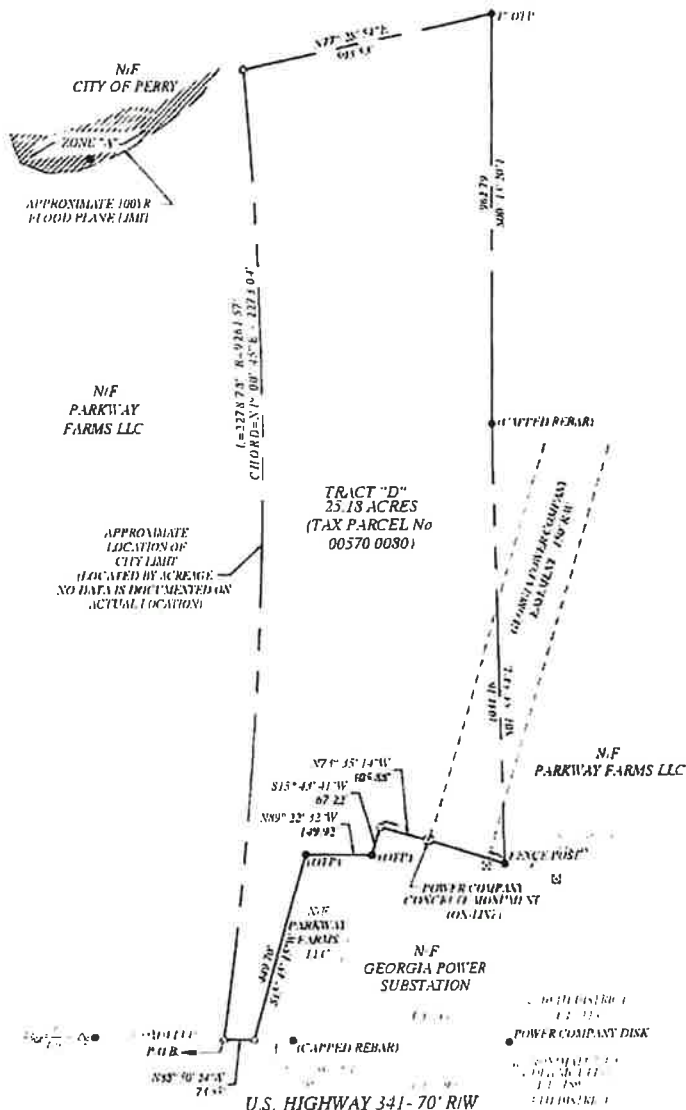
P.O. BOX 1871
 Perry, Georgia 31069
 Office (478) 224-7070
 Fax (478) 224-7072
 WWW.MCLEODSURVEYING.COM

McLeod SURVEYING

PARKWAY FARMS LLC

SURVEY FOR:

COUNTY:	HOUSTON
DISTRICT:	10TH
LAND LOT:	112
DATE:	7/29/2014
SCALE:	1"=200'
JOB NO.	0826-008



FOR THE CLERK OF SUPERIOR COURTS USE ONLY



P. 2708 - DISTRICT 10 CASE - WEST HAZARD 0000-0001-SUBJECT TO PLAT OF 4 PARCELS AT ALHAMBRA AND MAIN STREET IN PLANT CITY, GA. FILED IN PUBLIC RECORDS IN 2014. JPL/MLG



BRYANT ENGINEERING
 111 Peachtree Street, N.E.
 Atlanta, Georgia 30309
 Phone: (404) 525-1234
 Fax: (404) 525-5678
 www.bryant-engineering.com



PROJECT: PARKWAY
CREATED: 12/15/2011
DATE: 08/01/2012
SCALE: 1" = 40'
DRAWN BY: J. SMITH
CHECKED BY: M. JONES

CONCEPTUAL LAYOUT FOR
 THE ORCHARD ON MAIN
 GEORGIA

PERMITTED BY: PERRY
 SHEET NO. C0.1

REVISIONS	DATE	DESCRIPTION

SCALE: 1" = 40'
 NORTH



**PRELIMINARY PLAN
 NOT FOR FINAL RECORDING**

OWNER:
 THE ORCHARD ON MAIN
 111 Peachtree Street, N.E.
 Atlanta, Georgia 30309

Doc ID: 013197100008 Type: GLR
Recorded: 01/08/2014 at 04:23:31 PM
Fee Amt: \$1,945.00 Page 1 of 8
Transfer Tax: \$1,825.00
Houston, Ga. Clerk Superior Court
Carolyn V. Sullivan Clerk
BK 6463 PG 258-263

(Above space for recording officer use.)

After recording return to:

File No.: P'13-644

158424

WHGM

WALKER HULBERT GRAY & MOORE, LLP
P. O. Box 1770 / 909 Ball Street
Perry, Georgia 31069
Attorney: LARRY WALKER

STATE OF GEORGIA
COUNTY OF HOUSTON

EXECUTOR'S DEED UNDER POWER

THIS INDENTURE, made and entered into this 26th day of December, 2013, between **H. DAVID MOORE**, as Executor of the Last Will and Testament and Estate of **Mae D. Chapman**, deceased, of the State of Georgia, and County of Houston, of the First Part (hereinafter called "Grantor") and **PARKWAY FARMS, LLC**, a Georgia limited liability company, duly organized and existing under the laws of the State of Georgia, of the Second Part (hereinafter called "Grantee"); the words "grantor" and "grantee" to include their respective heirs, successors and assigns where the context requires or permits:

WITNESSETH:

That the said grantor (acting under and by virtue of the power and authority contained in said wills, the same having been duly probated and recorded in the Court of Probate of Houston County, Georgia), for and in consideration of the sum of ONE MILLION NINE HUNDRED TWENTY-FIVE THOUSAND AND NO/100 (\$1,925,000.00) DOLLARS, in hand paid, at and before the sealing and delivery of these presents (the receipt of which is hereby acknowledged), has granted, bargained, sold, alienated, conveyed, and confirmed, and by these presents does grant, bargain, sell, alien, convey and confirm unto the said grantee, all the following property, to-wit:

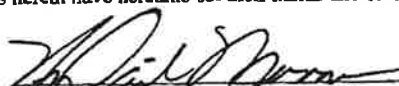
[FOR DESCRIPTION OF REAL PROPERTY SEE EXHIBIT "A" ATTACHED HERETO AND MADE A PART HEREOF BY REFERENCE THERETO.]

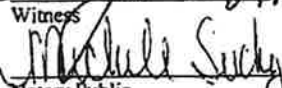
THIS CONVEYANCE is made subject to all zoning ordinances, easements and restrictions of record affecting said bargained premises.

TO HAVE AND TO HOLD the said tract or parcel of land, with all and singular the rights, members and appurtenances thereof, to the same being, belonging, or in anywise appertaining, to the only proper use, benefit and behoof of the said Grantee its successors and assigns in fee simple, in as full and ample a manner as the same was held, possessed and enjoyed, or might have been held, possessed and enjoyed, by the said MAE D. CHAPMAN.

IN WITNESS WHEREOF, grantors herein have hereunto set their hands and seals, the day and year first above written.

Signed, sealed and delivered in the presence of

 (SEAL)
H. DAVID MOORE, as Executor under the Last Will and Testament and Estate of **Mae D. Chapman**, deceased

Witness

Notary Public


 **MICHELE SUCHY**
Notary Public
STATE OF GEORGIA
My Comm. Exp. 1/9/14

EXHIBIT "A"
LEGAL DESCRIPTION

BOOK 6463 PAGE 259

PARCEL NO. 1: All that tract or parcel of land lying and being in Land Lot 112 of the 10th Land District of Houston County, Georgia, comprising 10 acres, known and designated as Tract "A" according to a plat of survey made by Milton Beckham, Surveyor, dated May 27, 1971, a copy of which is of record in Map Book 14, Page 213, Clerk's Office, Houston Superior Court, which said plat is by this reference thereto incorporated herein for the purpose of a more particular and accurate description of said Tract A.

The above described property is the same property conveyed to Tom Chapman by R.T. Tuggle, Jr., by Warranty Deed dated October 6, 1972, recorded in Deed Book 403, Page 670, Clerk's Office, Houston Superior Court.

The above described property is ALSO the same property as Parcel No. 11 conveyed to Mae D. Chapman by Executor's Deed of Assent dated July 29, 2004 and recorded in Deed Book 3216, Pages 218-228, Clerk's Office, Houston Superior Court.

Reference: Map Code P44-3C, comprising 10.0 acres, more or less.

PARCEL NO. 2: All that tract or parcel of land situate, lying and being in Land Lot 112 of the 10th Land District of Houston County, Georgia, comprising 25.32 acres, as shown by a plat of survey made by Rhodes Sewell, Surveyor, dated April 13, 1968, recorded in Map Book 12, Page 90, Clerk's Office, Houston Superior Court, which said plat is by this reference thereto incorporated herein for the purpose of a more particular and accurate description of said 25.32 acre tract or parcel.

The above described property is a portion of the property conveyed to Tom Chapman by R.T. Tuggle, Sr., by Warranty Deed dated May 27, 1968, recorded in Deed Book 304, Page 277, Clerk's Office, Houston Superior Court.

The above described property is ALSO the same property as Parcel No. 7 conveyed to Mae D. Chapman by Executor's Deed of Assent dated July 29, 2004 and recorded in Deed Book 3216, Pages 218-228, Clerk's Office, Houston Superior Court.

Reference: Map Code 57-9; P44-6; and P44-6C, comprising a total of 22.92 acres, more or less.

PARCEL NO. 3: All that tract or parcel of land situate, lying and being in Land Lot 112 of the 10th Land District of Houston County, Georgia, comprising 10 acres of land, more or less, being known and designated as Tract "B" on a plat of survey prepared by Milton Beckham, Surveyor, dated May 27, 1971, a copy of said plat being recorded in Map Book 14, Page 213, Clerk's Office, Houston Superior Court, which said plat is by this reference thereto incorporated herein for the purpose of a more particular and accurate description of said Tract B.

The above described property is the same property conveyed to Tom Chapman by Ruth Wynelle T. Shelton by Warranty Deed dated October 6, 1972 and recorded in Deed Book 403, Page 675, Clerk's Office, Houston Superior Court.

The above described property is ALSO the same property as Parcel No. 12 conveyed to Mae D. Chapman by Executor's Deed of Assent dated July 29, 2004 and recorded in Deed Book 3216, Pages 218-228, Clerk's Office, Houston Superior Court.

Reference: Map Code P44-3B, comprising 10.0 acres, more or less.

PARCEL NO. 4: All that tract or parcel of land situate, lying and being in Land Lot 112 of the 10th Land District of Houston County, Georgia, being partly within the City of Perry and partly outside the city, comprising 44.17 acres, more or less, according to a plat of survey made by Rhodes Sewell, Surveyor, on April 13, 1968, a copy of said plat being of record in Map Book 12, Page 90, Clerk's Office, Houston Superior Court, which said plat is by this reference thereto incorporated herein for the purpose of a more particular and accurate description of said 44.17 acre tract.

The above described property is the same property conveyed to Tom Chapman by W.V. Tuggle by Warranty Deed dated May 27, 1968, recorded in Deed Book 304, Page 278, Clerk's Office, Houston Superior Court.

LESS AND EXCEPT, all that tract or parcel of land situate, lying and being in Land Lot 112 of the 10th Land District of Houston County, Georgia, in the City of Perry, comprising 0.49 acres of land, as more particularly described on plat recorded in Map Book 24, Page 205,



BOOK 6463 PAGE 260

Clerk's Office, Houston Superior Court, which said plat is by this reference thereto incorporated herein for the purpose of a more particular and accurate description of said 0.49 acres of land.

LESS AND EXCEPT, all that tract or parcel of land situate, lying and being in Land Lot 112 of the 10th Land District of Houston County, Georgia, in the City of Perry, as more particularly described on plat recorded in Map Book 34, Page 198, Clerk's Office, Houston Superior Court, which said plat is by this reference thereto incorporated herein for the purpose of a more particular and accurate description of said Parcel. Said parcel contains 19,783 square feet according to said plat of survey.

LESS AND EXCEPT, all that tract or parcel of land situate, lying and being in Land Lot 112 of the 10th Land District of Houston County, and in the City of Perry, Georgia, being known and designated as Parcel A, comprising 1.000 acres, and having such shapes, metes, bounds, courses and distances as are shown on plat of record recorded in Map Book 35, Page 5, Clerk's Office, Houston Superior Court, which said plat is by this reference thereto incorporated herein for the purpose of a more particular and accurate description of said Parcel A.

LESS AND EXCEPT, all that tract or parcel of land situate, lying and being in Land Lot 112 of the 10th Land District of Houston County, and in the City of Perry, Georgia, being known and designated as Parcel B, comprising 1.000 acres, and having such shapes, metes, bounds, courses and distances as are shown on plat of record recorded in Map Book 35, Page 5, Clerk's Office, Houston Superior Court, which said plat is by this reference thereto incorporated herein for the purpose of a more particular and accurate description of said Parcel B.

LESS AND EXCEPT, all that tract or parcel of land situate, lying and being in Land Lot 112 of the 10th Land District of Houston County, Georgia, containing 4.636 acres, as shown on plat recorded in Map Book 43, Page 94, Clerk's Office, Houston Superior Court, which said plat is by this reference thereto incorporated herein for the purpose of a more particular and accurate description of said 4.636 acre tract or parcel.

The above described property is ALSO the same property as Parcel No. 6 conveyed to Mae D. Chapman by Executor's Deed of Assent dated July 29, 2004 and recorded in Deed Book 3216, Pages 218-228, Clerk's Office, Houston Superior Court

LESS AND EXCEPT, all that tract or parcel of land being known as Parcel A, containing 1.000 acre and Parcel B, containing 5.491 acres, as more particularly shown on plat of record recorded in Map Book 22, Page 13, Clerk's Office, Houston Superior Court, which said plat is by this reference thereto incorporated herein for the purpose of a more particular and accurate description.

LESS AND EXCEPT, all that tract or parcel of land comprising 2.4 acres, more or less, according to the Houston County Tax Assessors Office, and being more particularly shown in a Warranty Deed recorded in Deed Book 1157, Page 425, Clerk's Office, Houston Superior Court.

LESS AND EXCEPT, all that tract or parcel of land being known as Parcel C, containing 0.490 acre, as more particularly shown on plat of record recorded in Map Book 58, Page 100, Clerk's Office, Houston Superior Court, which said plat is by this reference thereto incorporated herein for the purpose of a more particular and accurate description.

Reference: Map Code P44-10; and 57-8, comprising 27.71 acres, more or less.

PARCEL NO. 5: All that tract or parcel of land situate, lying and being in Land Lot 112 of the 10th Land District of Houston County, Georgia, known and designated as Tract "C", containing 9.16 acres according to a plat of survey made by Milton Beckham, Surveyor, on May 27, 1971, a copy of said plat being recorded in Map Book 14, Page 213, Clerk's Office, Houston Superior Court, which said plat is by this reference thereto incorporated herein for the purpose of a more particular and accurate description of said Tract C.

The above described property is the same property conveyed to Tom Chapman by R.T. Tuggle, Sr., by Warranty Deed dated October 6, 1972 and recorded in Deed Book 403, Page 673, Clerk's Office, Houston Superior Court.

The above described property is ALSO the same property as Parcel No. 13 conveyed to Mae D. Chapman by Executor's Deed of Assent dated July 29, 2004 and recorded in Deed Book 3216, Pages 218-228, Clerk's Office, Houston Superior Court.

LESS AND EXCEPT, all that tract or parcel of land situate, lying and being in Land Lot 112 of the Tenth Land District of Houston County, Georgia, known and designated as Parcel "K-

BOOK 6403 PAGE 261

1", comprising 1.00 acres, according to a plat of survey prepared for Mae D. Chapman by Jones Surveying & Engineering, Inc., certified by Lee R. Jones, Georgia Registered Land Surveyor No. 2680, dated July 25, 2007, a copy of which is recorded in Map Book 69, Page 129, Clerk's Office, Houston Superior Court. Said plat and the recorded copy thereof are hereby made a part of this description by reference thereto for all purposes. Said less and excepted property is the same property as conveyed from Mae D. Chapman to Joseph S. Lomboy and Marietta Olaiivar-Lomboy by Warranty Deed dated December 10, 2007 and recorded in Deed Book 4506, Pages 236-237, Clerk's Office, Houston Superior Court.

LESS AND EXCEPT, all that tract or parcel of land situate, lying and being in Land Lot 112 of the Tenth Land District of Houston County, Georgia, known and designated as Parcel "V", comprising 1.00 acres, according to a plat of survey entitled "Survey for "Aaron G. Velie", prepared by Jones Surveying Company, certified by Lee R. Jones, Georgia Registered Land Surveyor No. 2680, dated December 19, 2008, a copy of which is recorded in Map Book 74, Page 61, Clerk's Office, Houston Superior Court. Said plat and the recorded copy thereof are hereby made a part of this description by reference thereto for all purposes. Said less and excepted property is the same property as conveyed from H. David Moore, as Executor under the Last Will and Testament and Estate of Mae D. Chapman to Perry Family Practice, LLC by Executor's Deed dated March 6, 2012 and recorded in Deed Book 5780, Pages 257-258, Clerk's Office, Houston Superior Court.

Reference: Map Code P44-3D, comprising 7.16 acres, more or less.

PARCEL NO. 6: All that tract or parcel of land situate, lying and being in Land Lot 112 of the 10th Land District of Houston County, Georgia, containing 1.5 acres, more particularly shown on a plat of survey prepared by Rhodes Sewell, Surveyor, on February 15, 1969, a copy of said plat being of record in Map Book 12, Page 261, Clerk's Office, Houston Superior Court, which said plat is by this reference thereto incorporated herein for the purpose of a more particular and accurate description of said 1.5 acres hereby conveyed.

The above described property is the same property conveyed to Tom Chapman by Lamar DeLoach by Warranty Deed dated June 6, 1986, recorded in Deed Book 722, Page 467, Clerk's Office, Houston Superior Court.

The above described property is ALSO the same property as Parcel No. 8 conveyed to Mae D. Chapman by Executor's Deed of Assent dated July 29, 2004 and recorded in Deed Book 3216, Pages 218-228, Clerk's Office, Houston Superior Court.

Reference: Map Code 57-10, comprising 1.5 acres, more or less.

PARCEL NO. 7: All that tract or parcel of land situate, lying and being in Land Lot 113 of the 10th Land District of Houston County, Georgia, comprising 2.01 acres, designated as Parcel "B" on a plat of survey prepared by Richard L. Jones, Georgia Registered Land Surveyor No. 1591, dated March 31, 1983, and recorded in Map Book 25, Page 216, Clerk's Office, Houston Superior Court, which said plat is by this reference thereto incorporated herein for the purpose of a more particular and accurate description of said Parcel B.

The above described property is the same property conveyed to Tom S. Chapman by Mary Porter Langston, Individually and as Administratrix With Will Annexed of the Estate of I.M. Langston, Jr., deceased, by Warranty Deed dated February 11, 1986, and recorded in Deed Book 708, Page 603, Clerk's Office, Houston Superior Court.

The above described property is ALSO the same property as Parcel No. 10 conveyed to Mae D. Chapman by Executor's Deed of Assent dated July 29, 2004 and recorded in Deed Book 3216, Pages 218-228, Clerk's Office, Houston Superior Court.

Reference: Map Code 57-14, comprising 2.01 acres, more or less.

PARCEL NO. 8: All that tract or parcel of land situate, lying and being in Land Lot 113 of the 10th Land District of Houston County, Georgia, being known and designated as Tract A, containing 198.6 acres, more or less, and having such shape, metes, bounds, distances and courses as are shown on plat of survey prepared by Richard L. Jones, Georgia Registered Land Surveyor No. 1591, dated March 31, 1983, recorded in Map Book 25, Page 216, Clerk's Office, Houston Superior Court, which said plat is by this reference thereto incorporated herein for the purpose of a more particular description of said Tract A hereby conveyed.

The above described Property is the same property conveyed to Tom S. Chapman by Mary P. Langston and I.M. Langston, Jr. by Warranty Deed dated May 6, 1983, recorded in Deed Book 628, Page 314, Clerk's Office, Houston Superior Court.

BOOK 6463 PAGE 262

LESS AND EXCEPT, all that tract or parcel of land situate, lying and being in Land Lot 113 of the 10th Land District of Houston County, Georgia, being more particularly described as follows: BEGINNING at a point 75 feet left on an opposite Station 330 + 59.94 on the survey centerline of Perry Bypass on Georgia Highway Project No. PR-8540-1 (153) from the point of beginning; thence from the beginning of a curve, which is the point of beginning, said curve having a central angle of 011 degrees 16 minutes 01 seconds, radius 7714.440 feet, chord bearing South 14 degrees 36 minutes 43.2 seconds East, and a chord distance of 1514.571 feet along the said curve for an arc distance of 1517.014 feet to the end of the curve, thence South 08 degrees 58 minutes 42.6 seconds East for 1418.202 feet to a point on the boundary; thence South 49 degrees 16 minutes 30.4 seconds East 76.271 feet to a point on the boundary; thence South 89 degrees 34 minutes 18.2 seconds East for 205.006 feet to a point on the boundary; thence South 00 degrees 27 minutes 07.6 seconds East for 25.003 feet to a point on the boundary; thence North 89 degrees 34 minutes 18.2 seconds West for 1072.472 feet to a point on the boundary; thence North 00 degrees 25 minutes 41.8 seconds East for 25.000 feet to a point on the boundary; thence South 89 degrees 34 minutes 18.2 seconds East for 615.037 feet to a point on the boundary; thence North 40 degrees 43 minutes 29.6 seconds East for 64.674 feet to a point on the boundary; thence North 08 degrees 58 minutes 42.6 seconds West for 1393.351 feet to the beginning of a curve, said curve having central angle of 011 degrees 20 minutes 21 seconds, radius 7564.440 feet, chord bearing North 14 degrees 38 minutes 53.3 seconds West, and a chord distance of 1494.615 feet along the said curve for an arc distance of 1497.057 feet to the end of the curve; thence South 78 degrees 35 minutes 19.1 seconds East for 13.079 feet to a point on the boundary; thence North 76 degrees 44 minutes 13.6 seconds East for 15.001 feet to a point on the boundary; thence North 76 degrees 44 minutes 6.0 seconds East for 6.000 feet to a point on the boundary; thence North 70 degrees 00 minutes 5.9 seconds East for 43.028 feet to a point on the boundary; thence North 69 degrees 26 minutes 2.6 seconds East for 59.167 feet to a point on the boundary; thence North 70 degrees 43 minutes 27.3 seconds East for 15.836 feet to the POINT OF BEGINNING, containing 10.861 acres.

LESS AND EXCEPT all that tract or parcel of land situate, lying and being in Land Lot 113 of the 10th Land District of Houston County, Georgia, consisting of 1.151 acres, more or less, conveyed by Tom Chapman to the City of Perry by Right of Way Deed dated August 9, 1991 and recorded in Deed Book 928, Page 210, Clerk's Office, Houston Superior Court.

LESS AND EXCEPT all that tract or parcel of land situate, lying and being in Land Lot 113 of the 10th Land District of Houston County, Georgia, and consisting of 0.012 acre, more or less, conveyed by Tom Chapman to the City of Perry by Right of Way Deed dated August 20, 1993 and recorded in Deed Book 1046, Page 757, Clerk's Office, Houston Superior Court.

The above described property is the same as Parcel No. 9 conveyed to Mae D. Chapman by Executor's Deed of Assent dated July 29, 2004 and recorded in Deed Book 3216, Pages 218-228, Clerk's Office, Houston Superior Court.

Reference: Map Code 57-12, comprising 186.58 acres, more or less.

PARCEL NO. 9: All that tract or parcel of land situate, lying and being in Land Lot 144 of the 10th Land District of Houston County, Georgia, comprising 84.34 acres, having such shape, metes, bounds, courses or distances as are shown on plat of record recorded in Map Book 9, Page 43, Clerk's Office, Houston Superior Court. Said plat shows 139.34 acres, and the property herein is all of said described property except that certain 55 acres, more or less, thereof which was previously conveyed to Robert L. Lucky, Jr., by deed of record in Deed Book 217, Page 486, Clerk's Office, Houston Superior Court. Said plat is by reference thereto incorporated herein for the purpose of a more particular and accurate description of said 84.34 acre tract or parcel.

The above described property is the same property conveyed to Tom Chapman by E. Beverly Chester by Warranty Deed dated December 22, 1977, and recorded in Deed Book 515, Page 737, Clerk's Office, Houston Superior Court.

LESS AND EXCEPT all that tract or parcel of land situate, lying and being in Land Lot 144 of the 10th Land District, of Houston County, Georgia, comprising 1.229 acres, known and designated as Parcel "A" as shown on plat of record in Map Book 52, Page 118, Clerk's Office, Houston Superior Court, which said plat is by this reference thereto incorporated herein for the purpose of a more particular and accurate description of said Parcel A.

The above described property is ALSO the same property as Parcel No. 19 conveyed to Mae D. Chapman by Executor's Deed of Assent dated July 29, 2004 and recorded in Deed Book 3216, Pages 218-228, Clerk's Office, Houston Superior Court.

Reference: Map Code 83-23, comprising 83.4 acres, more or less.

BOOK 6463 PAGE 263

PARCEL NO. 10: All that tract or parcel of land situate, lying and being in the 10th Land District of Houston County, Georgia, and in the East part of Land Lot 142, containing 94.60 acres, and having such shape, metes, bounds, courses and distances as are shown on plat of survey made by Rhodes Sewell, Surveyor, on April 23, 1940, a copy of said plat being of record in Map Book 1, Page 306, Clerk's Office, Houston Superior Court, which said plat is by this reference thereto incorporated herein for the purpose of a more particular and accurate description of said 94.60 acres.

The above described property is the same property conveyed to Tom Chapman by Gus Bannister by Warranty Deed dated December 12, 1973, and recorded in Deed Book 427, Page 154, Clerk's Office, Houston Superior Court.

LESS AND EXCEPT all that tract or parcel of land situate, lying and being in Land Lot 142 of the 10th Land District of Houston County, Georgia, comprising 61.030 acres, according to plat of record recorded in Map Book 51, Page 174, Clerk's Office, Houston Superior Court, which said plat is by this reference thereto incorporated herein for the purpose of a more particular and accurate description of said 61.030 acres.

LESS AND EXCEPT all that tract or parcel of land situate, lying and being in Land Lot 142 of the 10th Land District of Houston County, Georgia, containing .0904 acres, known and designated as Parcel D according to that certain plat of survey of record in Map Book 52, Page 120, Clerk's Office, Houston Superior Court, which said plat is by this reference thereto incorporated herein for the purpose of a more particular and accurate description of said Parcel D.

The above described property is ALSO the same property as Parcel No. 15 conveyed to Mae D. Chapman by Executor's Deed of Assent dated July 29, 2004 and recorded in Deed Book 3216, Pages 218-228, Clerk's Office, Houston Superior Court.

Reference: Map Code 82-16, comprising 33.47 acres, more or less.

ALSO CONVEYED is that certain 30.00' strip along Land Lot lines 143 and 144 and being more particularly described as follows: All that tract or parcel of land situate, lying and being in Land Lot 143 and 144 of the Tenth Land District of Houston County, Georgia, being known and designated as Tract "MC", comprising 2.11 acres, according to that certain plat of survey of said Property entitled "Survey for Estate of Mae D. Chapman", prepared by Jones Surveying & Engineering, Inc., certified by Lee R. Jones, Georgia Registered Land Surveyor No. 2680, dated December 18, 2013, a copy of which is of record in Map Book 75, Pages 194, Clerk's Office, Houston Superior Court. Said plat and the recorded copy thereof are hereby made a part of this description by reference thereto for all purposes.

Said 30.00' strip described above is the same property as conveyed from The Board of Commissioners of Houston County, Georgia to H. David Moore in his capacity as Executor of the Last Will and Testament and the Estate of Mae D. Chapman, Deceased, dated December, 2013 and as recorded in the Clerk's Office, Houston Superior Court.

NOTE: All tax map codes and acreage references are for informational purposes only.